



**PROFESSIONAL SUPPLIER OF  
VETERINARY EQUIPMENT AND SOLUTIONS IN CHINA**



*To Protect and Improve Animal Health*



**ARI Medical Technology Co., Ltd.**

**📍 Add:** Block C, CC Park, No.728 Lanzhou Road, Baohe Industrial Zone, Hefei City, Anhui, China.

**☎ Tel:** +86-551-63802963

**📱 Mobile:** +86-13510869655

**✉ Market:** sales@arivetcare.com

**✉ Service:** info@arivetcare.com



# COMPANY PROFILE

## ARI VETERINARY MEDICAL

ARI Veterinary Medical Technology Co., Ltd. (short as ARI Veterinary), is one wholly-owned subsidiary of ARI Medical Group, we dedicate to provide advanced veterinary medical devices from China and one-stop solutions for animal hospitals, clinics and other animal organizations around the world.

## COMPANY DEVELOPMENT

ARI Medical Group from China is with more than 20 years' experience in medical industry. As a wholly-owned subsidiary company, based on the current manufacture plants, research & development teams and distribution networks, ARI Veterinary aims to be the world-class veterinary medical devices provider and make effort to protect and improve animal health.

## OUR SERVICES

With a wide range of products line, including Animal Monitoring & Life Support, Operating Theatre Equipment, Medical Imaging, Clinical Examination, Animal Diagnostic Laboratory, Dental Equipment, Sterilizer, Pet Grooming. We are able to provide one-stop solutions for our customers. not only the equipments, but also the design and planning consulting for new veterinary practice by our professional team, and also the import-export delivery arrangement by our logistics experts. Our professional team dedicate to resolving your every issue accurately and efficiently, in order to enhance the buying experience and simplify the procedures of importing from China.

## OUR FOOTPRINTS

In China, we are working with more than 1000 veterinary hospitals, clinics and healthcare facilities. And we also exported to more than 100 countries in Europe, America, Africa, Oceania and Asia, our veterinary products and solutions have been widely recognized by the international markets for the reasonable price, perfect service and superior quality.

## CORE VALUES

Looking into the future, we shall adhere to the core values of "Customers First, Quality Commitment and Superior Service" and contribute to offer best veterinary medical devices from China to our customers around the world.

# ARI

# COMPANY OVERVIEW

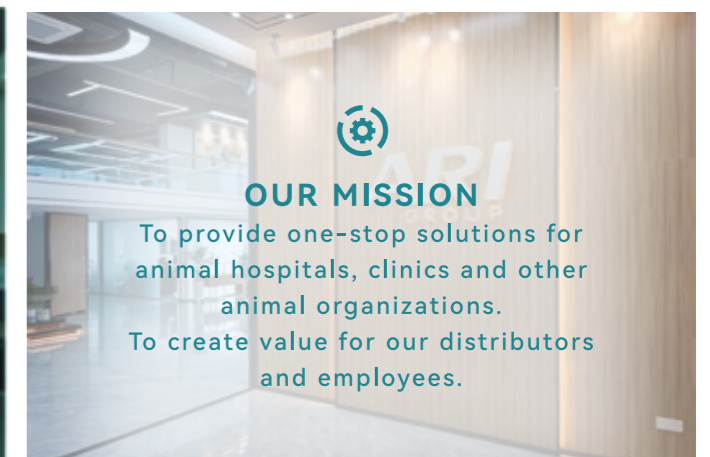
## Quality is the Basis of Values and Dignity!

Since the inception of ARI, product quality has been paramount. In line with ARI's quality policy – "Quality is the basis of values and dignity", we have instituted a comprehensive, standardized, and rigorous quality control system. This system permeates every phase of our operations, from R&D design, procurement quality control, manufacturing to the final product inspection, ensuring the zenith of product quality.



### OUR VISION

We aim to be the world-class veterinary medical devices provider and make effort to protect and improve animal health around the world.



### OUR MISSION

To provide one-stop solutions for animal hospitals, clinics and other animal organizations.  
To create value for our distributors and employees.



### OUR CORE VALUES

Customers First, Quality Commitment and Superior Service.



### OUR TEAM CONCEPT

Harmonious, Enterprising and Jointly Prosperous.

# PRODUCT CONTENTS

## • Animal Monitoring & Life Support

- 1 Anesthesia Machine
- 2 Multiparameter Monitor, Defibrillator
- 3 Syringe Pump, Infusion Pump
- 4 ECG Machine, Oxygen Concentrator, Nebulizer
- 5 ICU Incubator
- 6 Infusion Warmer, EtCO2 Monitor, Oxygen Mask

## • Operating Theatre Equipment

- 7 Operating Table, Disposal Table, Dissection Table
- 8 LED Operating Lamp, LED Examination Lamp
- 9 Electrosurgical Unit, Ultrasonic Scalpel
- 10 Electric Suction Unit
- 11 Electric Surgical Drill and Saw, Operating Microscope
- 12 Laser Surgery Machine
- 13 Air-Cushion Warmer, Stone Crusher

## • Animal Diagnostic Laboratory

- 14 Centrifuge, Biological Microscope
- 15 Gene Detection System, Microplate Reader, Hematology, Biochemistry, Urine, Blood Gas Analyzer
- 16 Medical Refrigerator, Biological Safety Cabinet, CO2 Incubator

## • Sterilizer (Autoclave)

- 17 Portable Sterilizer, Vertical Sterilizer, Horizontal Sterilizer
- 18 Table Sterilizer, Dry Heat Sterilizer, Sterilization Trolley



## • Medical Imaging

- 19 X-ray Digital Radiography System
- 20 Ultrasound Scanner, X-ray Film Illuminator
- 21 Ultrasound Scanner
- 22 Flexible & Rigid Endoscopy System

## • Dental Equipment

- 23 Portable Dental Unit, Dental Cleaning Table, Dental X-ray Unit, Cassette Sterilizer

## • Clinical Examination

- 24 Examination Table, Wood's Lamp, Pulse Oximeter, Scale
- 25 ENT Diagnostic Set, Slit Lamp, Ophthalmoscope, Vascular Doppler Detector, Blood Pressure Monitor
- 26 Pet Hospital Stainless Steel Cage
- 27 Pet Treadmill

## • Pet Grooming

- 28 Pet Dryer, Blowing Machine
- 29 Grooming Clipper, Grooming Table
- 30 SPA Water Bath Therapy Machine, Bathing Water Tank

## Vet Portable Anesthesia Machine V-902P

### Specifications

- Ventilation mode: Closed, Semi-closed, Semi-open
- Application: 2-100KG animals
- Gas source: O<sub>2</sub>, N<sub>2</sub>O, 0.25Mpa~0.65Mpa
- Two Tube(2), N<sub>2</sub>O: Scope, 0-10L/min with linkage device, O<sub>2</sub> concentration not low than 25%
- O<sub>2</sub> Flush: more than 25L/min
- Respiratory mode: Manual, Oxygen
- TV: 50~20000mL
- I:E: according to the doctor operation
- BPM: according to the doctor operation



## Mini Veterinary Monitor VET-M3T

### Specifications

- Easy operation by 3.5" color TFT
- Up to 100 users ID switch
- M3T=SpO<sub>2</sub> +NIBP + TEMP
- Two measurement modes: Spot or Monitoring modes
- Data storage capabilities-historical data view, trend graph view
- Monitoring mode -continuous recording, 48 hours of measurement data
- Spot mode -100 user ID's, each user can store 200 data sets
- Audible and visual alarms, with upper and lower alarm limit adjustment
- Lithium ion battery power supply
- Optional charging docking station



## Vet Multiparameter Monitor VET-M12

### Specifications

- 12-inch high-brightness LCD monitor.
- Six Standard parameters: ECG, RESP, NIBP, SPO<sub>2</sub>, TEMP, PR/HR
- Rechargeable lithium battery, 2000mAh
- Suitable for different groups of pets: large, medium, small pets.
- Multiple display modes: standard, large character, trend graph, blood pressure list, etc
- Support multi-lead display of ECG waveforms on the same screen.
- Equipped with a blood pressure cuff for pets Accurate blood pressure measurement.
- Multiple analysis functions.
- Quick setup alarm function.



## Vet Defibrillator V-DEF8000A

### Specifications

- Non-synchronizer: External defibrillation
- Sine wave: Biphasic technology
- Energy: 0, 3, 5, 7, 10, 20, 30, 50, 100, 200, 300, 360 Joule (Nominal at a resistance of 50)
- Charging time: at 360J less than 10 sec
- Paddle: Reusable external paddles
- Power Supply: Operates from the mains (AC) and battery
- Battery: Charge 3.5h to full; full charge to 35 shocks (360 Joule)



## VET Difibrillator V-DEF8000C

### Specifications

- 7 inches high-resolution TFT colour display
- Biphasic De-brillation, ECG, NIBP, TEMP, SPO<sub>2</sub>, Pulse, Recorder (Optional AED, Pacer)
- De-brillation type: Manual, Synchronized, Asynchronized
- Output waveform: Biphasic technology
- Energy selection: 0, 3, 5, 7, 10, 20, 30, 50, 100, 200, 300, 360 Joule
- Charging time: Less than 10 seconds to 360 Joules
- Paddles: Reusable external paddles
- Battery type: Li-ion battery Li1104c 11.1Vdc 4000mAh X2
- Battery capacity: Up to 10 hours ECG monitoring or 60 full-energy discharges.



## Vet Anesthesia Machine V-1200V2

### Specifications

- Ventilation mode: Open, closed, half-closed, half-open
- Drive mode: pneumatic
- Application: 0.5-100kg animal
- Vaporizer: Choose one from Isoflurane, Sevoflurane, Halothane
- Oxygen flush: 25L/min~75L/min
- Gas source pressure: Oxygen 0.25Mpa~0.65Mpa
- Trolley: Optional
- Respiration mode: PCV, VCV, SPONT, DEMO
- Bellow: Big animal: 50-1600ml, small animal: 0-300ml
- Screen: 9 inches touch screen
- BPM: 1-100bpm
- I:E: 9:1 to 1:9.9
- Inspiratory Time: 0.1s-10.0s



## Vet Anesthesia Machine V-1200V5

### Specifications

- Ventilation mode: Open, closed, half-closed, half-open
- Drive mode: pneumatic electric control
- Application: 0.5-100kg animal
- Vaporizer: Choose one from Isoflurane, Sevoflurane, Halothane
- Oxygen flush: 25L/min~75L/min
- Gas source pressure: Oxygen 0.25Mpa~0.65Mpa
- Trolley: Optional
- Working mode: Mechanical control, Manual control
- Ventilation mode: IPPV, Manual
- Bellow: 0-300ml, 300-1500ml
- Screen: LCD
- I:E: 1:1~1:4 adjustable
- Minute ventilation volume: No less than 15L/min



## Vet Syringe Pump VSP-1800G

### Specifications

- Compatible with any brand syringes from 5ml,10ml,20ml,30ml,50ml and 60ml.
- High accuracy +/- 2% with correct calibration
- Five work modes: Rate /Time/Dose/Sequential(optional)/Drug library Mode(optional).
- Manual or Automatic Bolus/Purge/KVO function
- Vertical & Horizontal mounting clamp.
- Anti-bolus system to reduce significantly after occlusion sudden release.
- DPS Occlusion Pressure display.
- 2000 events stored can be checked and downloaded.
- Large color TFT display with adjustable brightness.
- Built-in Lithium Battery: Rechargeable, 7.2V, 2600mAh, 12 hours of continuous operation



## Vet Syringe Pump VSP-1800S

### Specifications

- Screen:4.3-inch LCD color touch screen
- Syringe types:2ml, 5ml, 10ml, 20ml, 30ml, 50/60ml Open system, automatic recognition of syringe brands and sizes after calibration
- Infusion mode:ml/h (include Rate mode, Time mode), Body weight, TIVA, Loading-dose, Ramp up/down, Sequence, Drug Library mode
- Accuracy:±2%
- Flow rate range:0.01-1500ml/h (min. increment 0.01ml/h
- VTBI:0-9999 ml
- Wireless:WIFI (Optional)
- History record:More than 5000 entries
- Lithium polymer battery 11.1V 2600mAh, more than 12 hours operating time @5ml/h.



## Vet Infusion Pump VIP-1200Y

### Specifications

- 3.0 inch Color TFT display with adjustable brightness.
- Accuracy:±2%
- Delivery rate range:0.1ml/h~1500ml/h
- Delivery time range:00h01min0s~99h59min59s (1 min step)
- Total volume range:0.0-9999.9ml (0.1 ml step)
- KVO Rate: 0.1~20mL/h
- Optional drop sensor
- Fit IV tubes:Can be used with any brand IV set after exactly calibration
- Drug library with 1030 drug names.
- 5000 events stored can be checked and downloaded.
- Battery:Built-in Lithium Battery: Rechargeable, 7.4V, 2600mAh; 8 hours of continuous operation



## Vet Infusion Pump VIP-1200V

### Specifications

- 4.3-inch LCD color touch screen
- Infusion mode:ml/h (include Rate mode, Time mode), Body weight, Drip, Loading-dose, Ramp up/down, Sequence, Drug Library mode
- Accuracy:±5%
- Flow rate range:0.01-1200ml/h (increment 0.01ml/h)
- VTBI:0-9999 ml
- KVO:0.01-5ml/h adjustable
- Optional WIFI
- Optional drop sensor
- Drug library:No less than 2000 drugs
- History record:More than 5000 entries
- Battery:Lithium Polymer battery 11.1V 2600mAh;More than 9 hours operating time @ 25ml/h



## Vet ECG Machine VECG-C03B (3 Channel)

### Specifications

- 7 Leads,80mm, 3 channel record
- Recording format 1ch+, 3ch, 3ch+
- Paper speed:6.25, 12.5, 25, 50mm/s (±3%)
- Paper size:80mmx20m roll paper
- Working Model: Auto, Manual, Rhythm
- 3.5 inch color LCD to display
- 250 patient cases storage and reply
- 2200mAh rechargeable lithium battery ; supports continuous work for about 9 hours.
- With auto-interpretation function



## Vet ECG Machine VECG-C06G (6 Channel)

### Specifications

- 7 Leads,112mm, 6 channel record
- Recording format 3ch+, 6ch, 6ch+
- Paper speed:6.25, 12.5, 25, 50mm/s (±3%)
- Paper size:112mmx20m roll paper
- Working Model: Auto, Manual, Rhythm
- 7 inch color touch LCD to display and operate
- 250 patient cases storage and reply
- 2200mAh rechargeable lithium battery ; supports continuous work over 6 hours.
- With auto-interpretation function



## Vet Oxygen Concentrator NJ-50VV

### Specifications

- Flow Rate:0-5LPM
- Oxygen Purity:93% (+/-3%)
- Outlet Pressure:6-10PSI
- Sound Level:≤50db
- Power consumption:≤550W
- Alarm:Power failure alarm, High&Low pressure alarm
- Double flows is optional
- Support 24 hours working.



## Vet Compressor Nebulizer VET-N2

### Specifications

- Maximum atomization rate:0.2mL/ min
- The residual amount of liquid medicine:≤1.0mL
- Mist particle size(MMD):4um ± 25%
- Output pressure:60-130kPa:60-130kPa
- Free flow of compression pump:≥4.5L/ min
- Noise:≤60dB(A)
- Input power:≤100W



## Pet ICU Incubator VET-1803

### Specifications

- It can adjust temperature, humidity, connect oxygen, etc.
- Real-time monitoring of temperature, humidity, CO2 concentration and nebulizing
- Comes with 10 lighting stage amber lighting, UV disinfection lamp for sterilization, and high concentration of negative ions
- The index can be seen briefly in the display window
- VET-1803 is purple color, with external nebulizer, built-in humidifier, and CO2 monitoring.
- Input power: ≤400VA
- Ambient temperature: 10°C ~ 35°C
- Cabinet temperature control range: 15°C ~ 38°C (can be up to 39°C by special operations)
- Temperature fluctuation: ≤0.8°C
- Average temperature of monitoring chamber: ≤1.0°C
- Cabinet temperature control accuracy: ≤±0.5°C
- Temperature rise time: 5 ~ 20min
- Noises in monitoring room: ≤30dB
- Product size: 88\*55\*47cm



## Pet ICU Incubator VICU-02

### Specifications

- External dimensions: L1200\*D65\* Height 1720mm
- 8.4-inch touch color screen
- 24/7 Real time monitoring
- When the CO2 index reaches a certain value, it will automatically start discharging.
- Inner wall wrapped 3D balanced circulation temperature control system
- Setting temperature:Temperature control accuracy of 16-38 ° C ;Soil 0.5°C
- Set oxygen concentration:21~60%, control accuracy ±1%
- Micro printer:Intelligent automatic timed printing system
- UV sterilization:UVC band 253nm ,efficient UV sterilization system
- Blue light medical system:Blue 415nm LED
- Medical nebulizer:Maximum atomization rate=0.2ml/min



## Pet ICU Incubator VICU-04

### Specifications

- External dimensions: L1290 x D660 x H1890mm
- 8.4-inch touch color screen
- 24/7 Real time monitoring
- When the CO2 index reaches a certain value, it will automatically start discharging.
- Inner wall wrapped 3D balanced circulation temperature control system
- Setting temperature:Temperature control accuracy of 16-38 ° C ;Soil 0.5°C
- Set oxygen concentration:21~60%, control accuracy ±1%
- Micro printer:Intelligent automatic timed printing system
- UV sterilization:UVC band 253nm,efficient UV sterilization system
- Blue light medical system:Blue 415nm LED,
- Medical nebulizer:Maximum atomization rate=0.2ml/min



## Vet Blood and Infusion Warmer VET-1100C

### Specifications

- Temperature Setting: °C: 35.0°C~42.0°C or °F: 95.0°F~107.6°F
- Temperature Accuracy:°C:≤ ±1°C or °F:≤±1.8°F
- Warming up time:≤2 mins
- Overheat Protection:46°C,hardware and software protection
- Display:LED
- Power Consumption:85VA
- Working mode:Continuous heating



## Vet Fluid Infusion Warmer VIW-1010

### Specifications

- Double groove heating for 2 infusion sets
- Optional working with drop sensor
- Fast heating, 3-5 minutes to reach the set temperature
- Cut off the power supply automatically when overheat of fluid
- 2 flexible installations: with hanger or pole clamp
- The pole clamp has hidden function, saving space
- 10 languages: Chinese, English, French, Italian, Spanish, Russian, Portuguese, Turkish, Bulgarian, Romania



## Vet ETCO2 Monitor VCapno-H

### Specifications

- 2.8-inch color TFT, clear monitoring of EtCO2/CO2, respiration rate, SpO2 and Pulse (Optional)
- Temperature, Pressure compensation system and Zero readjustment system, all of them insure the accuracy and stability.
- Balance gas compensation makes minimum influence against other gases.
- Audio-optical alarm for exceeding limits and Apnea.
- 24 hours trend diagram keeps still available after power-off.
- Large capacity lithium battery for 10 hours UPS
- CO 2 Unit:mmHg,kPa,% (selectable)
- EtCO2 Update:Every Breath
- Trend Length:24 Hours
- CO2 Measurement Range:0-150mmHg



## Vet Oxygen Mask VET-M5

### Specifications

- Professional oxygen and nebulization mask for veterinary use.
- Configuration: 5pcs masks, one storage box



## Vet Operating Table VOT-S02

### Specifications

- Length: 1370mm
- Width: 600mm
- Height: 410~950mm
- Load Capacity: 200kg
- The overall material is thickened 304 stainless steel material
- Equipped with stainless steel mesh, pet hooks on both sides, infusion rack, instrument tray, waste bucket



## Vet Operating Table VOT-03

### Specifications

- The table material is fully 304 stainless steel
- Wireless control
- Table top consists of 2 plates; both table plates can tilt 45°.
- Length: 1400mm
- Width: 650mm
- Height: 760~1060mm
- Table top tilt: 15°
- Plate tilt: 45°
- Load capacity: 250kg
- Packing: 148\*75\*96cm, wood case, GW. 170kg



## Vet Operating Table VOT-05

### Specifications

- Electrical hydraulic, use for bull and horse operation
- Equipped with IV pole, waste liquid tank and stainless steel tray
- Equipped with universal brake wheel
- Foot control pedal controls the lift and down
- Four detachable leg supports, size: L700\*W400mm
- Overall dimension: 3700\*1200\*(680~870) mm
- Table tilt: 0~30°
- Load Capacity: 1500kg



## Vet Disposal Table DOT-01

### Specifications

- Fully 304 stainless steel
- 3 drawers and 1 cabinet
- Adopt full circular bead without blind angle, easily clean
- With stainless steel pull-out faucet, 2 water outlets
- Product Size: L140\*W60\*H85cm
- Package dimensions: L148\*W70\*H110cm, wood case
- Package weight: 140kg



## Vet Dissection Table VST-01

### Specifications

- Fully 304 stainless steel
- Two sizes available
- Product dimension: VST-01A: L1720\*W730\*H960cm, wood case; VST-01B: L1210\*W650\*H935cm, wood case
- VST-01B: L1100\*W550\*H800cm
- Packing dimension: VST-01A: L1720\*W730\*H960cm, wood case; VST-01B: L1210\*W650\*H935cm, wood case



## Vet LED Operating Lamp VML700/700

### Specifications

- Illuminance:  $\geq 160,000\text{Lux}$  /  $\geq 160,000\text{Lux}$
- Color Temperature: 3800±500K, 4400±500K, 5000±500K
- Color Reduction Index (Ra): 93
- Illuminance Depth:  $\geq 1300\text{mm}$
- Total Irradiance: 544W/m<sup>2</sup> / 544W/m<sup>2</sup>
- Size of Light Field: 250 ~ 300mm
- Service Life of Illuminant: 50,000h
- Brightness Adjustment: Automatic 8-stage continuous light adjustment
- Lowest Height of Installation: 2900mm
- Total Power Consumption: 160W
- Total LED Bulb Quantity: 216pcs (18\*6+18\*6)



## Vet LED Operating Lamp VYD02-5+5

### Specifications

- Illuminance:  $\geq 100,000\text{Lux}$
- Color Temperature: 4800±300K
- Illuminance Depth:  $\geq 500\text{mm}$
- Size of Light Field: 160 ~ 220mm
- Rated Power of Bulb: 3.2V/1W
- Power Supply Voltage: 220V/50Hz
- LED Bulb Life:  $\geq 30,000$  hours
- Total LED Bulb Quantity: 80pcs



## Vet LED Examination Lamp VC200

### Specifications

- Illuminance: 50,000Lux
- Color temperature :4800±500k
- Power supply voltage:220V/50Hz
- Rated power of bulb :3.2V/1W
- Bulb: LED bulb
- Total power consumption: 50W
- Total LED bulb quantity: 13 pcs



## Vet LED Examination Lamp VC01A

### Specifications

- Illuminance: 30,000Lux 0.5m / 10,000Lux 1m
- Color Temperature: 4800±200K
- Size of Light Field: 100mm
- Adjust: Adjust light
- Power Supply Voltage: 220V/50Hz
- Rated Power of Bulb: 3.3V/3W
- Crutch: Adjust up/down
- Bulb: LED bulb



## Vet Electrosurgical Unit VESU-2000I

### Specifications

-Applicable for all the surgeries and Prostate Vaporizing Surgical Operation(TUR), perfectly used under water. It can be cooperated with Endoscope, Uteroscope and Laparoscope.

-Max 350W

-Six Working Modes:

Monopolar Cut

a) Pure Cut: 1W~350W (Load 800Ω)

b) Blend1: 1W~200W (Load 800Ω)

c) Blend2: 1W~250W (Load 800Ω)

Monopolar Coag

d) Spray Coag: 1W~80W (Load 800Ω)

e) Soft Coag: 1W~120W (Load 800Ω)

Bipolar

f) Bipolar Coag: 1W~70W (Load 200Ω)



## Vet Electrosurgical Unit VESU-P200

### Specifications

-Intelligent Electrosurgical Platform, applicable for various surgeries: Head and Neck, ENT, Hepatobiliary, Mammary, Urological, Thoracic Radical, Gastrointestinal Radical, Minimally Invasive, Sterilization Procedures

-Max 200W, 11 Working Modes:

-Monopolar Cut (4 modes): Pure cut, Blend 1/ 2/3

-Monopolar Coag (3 modes): Soft, Spot, Surface coag

-Bipolar (2 modes): Standard mode; Intelligent mode

-Vessel Sealing/Ligasure (2 modes): Manual mode; Intelligent mode



## Vet Ultrasonic Scalpel VUS-K200

### Specifications

-Two Interfaces for both ultrasonic scalpel and rebirth knife

-Frequency of Output: 55.5kHz

-Peak Power: 45W

-Cutter Head Diameter: 5.5 mm

-Cutting Gear Position: Grades 1 to 5

-Weight of Generator: 2.85 kg

-Power Input: 220V / 50Hz

-Shock Protection Grade: CF-Type / Class I

-Standard Configuration: 1 generator, 2 transducers, 3 disposable scalpel heads (14cm, 23cm, 36cm), 2 spherical rebirth knife, 2 annular rebirth knife, 2 knife-shaped rebirth knife, 1 foot pedal



## Vet Ultrasonic Scalpel VUS-G1

### Specifications

-Generator system booting time: 8 seconds

-Toning time: 3 seconds

-Blade material: Titanium alloy, nanometer double coating

-Frequency: 55.5kHz ±2kHz

-Continuous trigger time (max): 15 seconds

-Sealed vessel diameter (max): 5mm

-Disposable scalpel head, up to 200 times activation

-Standard configuration: 1 generator, 1 transducer, 3 disposable scalpel heads

(14cm, 23cm, 36cm)



## Vet Portable Electric Suction Unit VET-23B.III (AC/DC)

### Specifications

-Suction Rate: ≥28L/min

-Negative Pressure Range: 0.013-0.09Mpa (680mmHg)

-Suction Bottle: 1000ml plastic bottle

-Noise / Input Power: ≤55dB / 150VA

-AC and DC power supplies, can be connected to car-carried power supply

-Store and supply power itself, up to 2 hours



## Vet Mobile Electric Suction Unit VET-23C.V

### Specifications

-Suction Rate: ≥40L/min

-Negative Pressure Range: 0.013-0.09Mpa (680mmHg)

-Suction Bottle: 2500mlx2

-Input Power: 400VA

-Noise: ≤60dB

-All plastic enclosure which is formed in one piece



## Vet Mobile Electric Suction Unit VET-23D.I

### Specifications

-Suction Rate: ≥40L/min

-Negative Pressure Range: 0.013-0.09Mpa (680mmHg)

-Suction Bottle: 2500mlx2 (glass bottle)

-Input Power: 400VA

-Noise: ≤60dB

-All plastic enclosure which is formed in one piece



## Vet Large Flow Electric Suction Unit VET-23C.X

### Specifications

-Suction Rate: ≥80L/min

-Negative Pressure Range: 0.013-0.09Mpa (680mmHg)

-Suction Bottle: 2500mlx2 (glass bottle)

-Input Power: 400VA

-Noise: ≤65dB

-Package: 47\*47\*96cm, 45kg

-Adopts high quality cold plate shell



## Vet Electric Surgical Drill and Saw V-BM100

### Specifications

- Multifunctional Electric Surgical Drill and Saw
- Forward and Reversal
- Bone drill speed 0-1300r/m
- Cannulated drill speed 0-600r/m
- Oscillating saw 0-18000osc/m
- Acetabular bone drill 0-500r/m
- Craniotomy drill 0-900r/m

- Craniotomy mill 0-40000r/m
- Sternum saw 0-15000osc/m
- Saw non-load noise  $\leq 75$ dB
- Drill non-load noise  $\leq 65$ dB
- Diameter run-out  $\leq 0.5$ mm
- Oscillations 0-15000r/min
- 135 °C high temperature sterilization



## Vet Electric Surgical Drill V-BD2011

### Specifications

- Canulate Drill
- Power Output 100W
- Torque 12.5/7.5N.m

- Rotating speed 0-650/1000rpm
- Noise  $\leq 45$ dB
- 135 °C high temperature sterilization



## Vet Electric Surgical Saw V-BS2011

### Specifications

- Rotate Mini Bone Saw
- Power Output 50W
- Working Voltage 7.2V

- Rotating speed 0-18000rpm
- Noise  $\leq 45$ dB
- Autoclavable up to 135°C to do sterilization



## Vet Operating Microscope VOM-130

### Specifications

- Mainly used for dental and ophthalmology surgery
- Observation angle: 45°tilted
- Magnification of observation: 6X
- Interpapillary distance: 50mm-80mm
- Diopter:  $\pm 5$ D
- Focal length of objective: F=200mm and F=300mm two objectives
- Total Magnification: 3X, 5X, 8X, 4.7X, 7.5X, 12X

- Linear field: 60.8mm, 37.9mm, 23.6mm, 40.6mm, 25.3mm, 15.8mm
- Fine focusing distance: 10mm
- Fiber-optic cable: 1700mm
- Lamp: 10W LED lamp
- Filter: Build-in green and yellow filter
- Options: Demonstrator, Camera, SLR camera adapter, Monitor, Objective F=250mm & F=400mm, Table mount clamp, Wall mount bracket, Monitor mount



## Vet Operating Microscope VOM-120

### Specifications

- Mainly used for ear-nose-throat surgery
- Observation Angle: Straight
- Magnification of Observation: 6X
- Interpapillary Distance: 50mm-80mm
- Diopter:  $\pm 5$ D
- Focal Length of Objective: F=200mm and F=300mm two objectives
- Total Magnification: 3X, 5X, 8X, 4.7X, 7.5X, 12X

- Linear Field: 60.8mm, 37.9mm, 23.6mm, 40.6mm, 25.3mm, 15.8mm
- Fine Focusing Distance: 10mm
- Lamp: 10W LED lamp
- Filter: Build-in green and yellow filter
- Options: Demonstrator, Camera, SLR camera adapter, Monitor, Objective F=250mm & F=400mm, Table mount clamp, Wall mount bracket, Monitor mount



## Vet Diode Laser Surgery Machine VDL15B

### Specifications

- Wavelength: 650nm, 810nm, 915nm, 980nm, 1064nm
- Output Power: CW 42 W, ISP 52 W
- Pulse Duration: 10 $\mu$ s-3s
- Control Mode: 10.1" Color LCD touch Screen
- Standard with a vet surgery handpiece
- Scope of application: Dentistry, Lipolysis (Laser fat burning), EVLT (Endovenous laser treatment), Spider Vein, ENT, Dermatology, Orthopedics, PLDD (Percutaneous Laser Disc Decompression), Neuro surgery, Gynaecology, General surgery, Therapy, Veterinary



## Vet Diode Laser Surgery Machine VDL26

### Specifications

- Wavelength: 650nm, 810nm, 980nm, 1064nm
- Maximum Power: CW 30.5 W, ISP 75.5 W
- Operation Mode: CW, Single or Repeat Pulse
- Pulse Duration: 25 $\mu$ s-900ms
- Color LCD touch Screen
- Standard with a set of vet surgery handpiece
- Scope of application: Dentistry, Lipolysis (Laser fat burning), EVLT (Endovenous laser treatment), Spider Vein, ENT, Dermatology, Orthopedics, PLDD (Percutaneous Laser Disc Decompression), Neuro surgery, Gynaecology, General surgery, Therapy, Veterinary.



## Vet CO2 Laser Surgery Machine VCL15

### Specifications

- Output Power: 15w
- Pulse Width: 0.1-2ms
- Pulse mode: Ultra, continuous pulse
- Laser spot size: 0.1-0.5mm
- Wavelength: 10600nm
- Cooling system: Air Cooling
- Articulated arm: 7 joint spring-balanced
- Working radius: 110cm
- Scope of application: gynaecology, dermatology, ENT, urology, anorectal, physiotherapy



## Vet CO2 Laser Surgery Machine VCL50

### Specifications

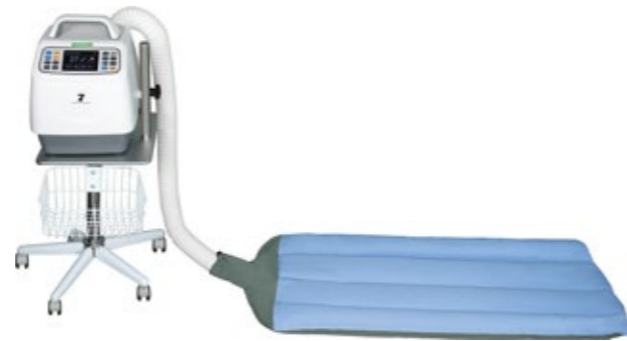
- Output Power: 40w
- Display: 8 inch color LCD control display, automatic detection and display fault
- Pulse Width: 0.1-2ms
- Pulse recurrence rate: 5-500 ms
- Pulse mode: Ultra, continuous, single, repeat pulse
- Output mode: Repeat / Ultra Pulse
- Treatment Size: 20\*20mm<sup>2</sup> (Adjustable)
- Focal Spot Diameter: <0.5mm
- Wavelength: 10600nm
- Articulated arm 7 joint spring-balanced
- Working radius: 140cm
- Scope of application: gynaecology, dermatology, ENT, general surgery and others: underarm odour, corn, ulcer



**Vet Air-Cushion Warmer VET-210V**

**Specifications**

- Temperature Setting: 32.0~41.0°C, 95.0~105.8°F
- Temperature Increment: 0.1°C, 0.1°F
- Temperature Deviation: <math>\pm 1^\circ\text{C}</math>, <math>\pm 1.8^\circ\text{F}</math>
- Warming Up Time: <math>< 4</math> minutes
- Working Mode: Continuous working
- Operation Time: Real time display
- Alarm: Overheat, low temperature, no operation, fan error, temperature sensor error
- Display: 8 Level
- Natural Wind Function: Available
- Quick Temperature Setting: 4 Temp.
- Alarm volume: 8 Level
- Mute Time: 2 minutes
- History Record: More than 10,000 logs for necessary search
- Air Purification Function: With 0.25 $\mu$ 1 filter and plasma air purification function.
- Reusable blankets size: 120cm x 60cm



**Vet Stone Crusher (Lithotripter) VSC-L**

**Specifications**

- Used to break pet urinary stones
- Impact wave source
- Pulse width 1 $\mu$ S; Pulse front 0.5 $\mu$ S
- Spot range: 6.0\*6.0 $\pm$ 35mm
- Shock wave adaptation pet treatment depth: 110mm
- Ultrasound machine target system
- Shock wave trigger frequency: 40~90/min
- Trigger mode: manual and continuous
- Touch screen operation
- Treatment bed maximum load capacity is 50kg
- Water treatment system
- Shockwave probe is tilted



**Vet Stone Crusher (Lithotripter) AP100 (All-in-One)**

**Specifications**

- Multifunctional All-in-One machine, combines pet lithotripsy, bone and muscle therapy and mastitis treatment in a single unit
- Shock Wave Lithotripsy:
  - Energy Level: 5-8
  - Frequency: 180
  - Preset Trigger Numbers: 2000-3000
- Musculoskeletal Therapy:
  - Energy Level: 3-8
  - Frequency: 120-180
  - Preset Trigger Numbers: 1000
- Mastitis Treatment:
  - Energy Level: 5-8
  - Frequency: 120-180
  - Preset Trigger Numbers: 1000



**Vet High Speed Centrifuge VHC-20L**

**Specifications**

- Time: 0-99min
- Max RCF: 26500xg
- Max RPM: 20000RPM, stepless speed adjustment
- Rotor capacity: 1.5/2ml\*12 (Standard Rotor 1)
- Voltage: 110V 60Hz/220V 50Hz

- Brushless frequency motor
- LCD display speed, RCF and time
- Over speed and imbalance alarm
- Touch Panel control, automatic stop once lid open
- Error code display



**Vet High Speed Refrigerated Centrifuge VHC-20F**

**Specifications**

- Time: 0-99min
- Max RCF: 26500xg
- Temperature range: -20°C+40°C
- Temperature precision:  $\pm 2^\circ\text{C}$
- Voltage: 220V 50Hz
- Max RPM: 20000RPM, stepless speed adjustment

- Rotor capacity: Angle rotor 1.5/2ml\*12 (Standard Rotor 1)
- DC brushless frequency motor, LED display speed, RCF and time
- French refrigeration compressor
- Touch panel control, the error code display



**Vet Low Speed Centrifuge VLC-04C**

**Specifications**

- Time: 0-99min
- Max RCF: 2325xg
- Max RPM: 4000RPM, stepless speed adjustment
- Rotor capacity: 20ml\*12 (Standard Rotor 1)
- Voltage: 110V 60Hz/220V 50Hz

- High brushless motor
- LED display speed and time
- Over speed and imbalance alarm
- With mechanical door lock and safety switch
- Error code display, speed up and down adjustment



**Vet Hematocrit Centrifuge VHC-12C**

**Specifications**

- Time: 0-99min
- Max RCF: 15300xg
- Max RPM: 12000RPM, stepless speed adjustment
- Rotor capacity:  $\leq 1.5*75\text{mm}^*24$  capillary tubes
- Voltage: 110V 60Hz/220V 50Hz
- High power brushless motor
- LED display speed and time

- Microcomputer controlling
- Over speed and imbalance alarm
- With mechanical door lock and safety switch
- Error code display, speed up and down adjustment
- With brake and automatic alarm after operation
- With reader
- Accurately measuring the specific value of blood cell



**Vet Biological Microscope VC-XSZ-N107**

**Specifications**

- Viewing head: Sliding Binocular Head Inclined at 45°
- Eyepieces: Wide Field Eyepiece, WF10X (WF16X optional)
- Achromatic objective: 4X, 10X, 40X (S), 100X (S, Oil)
- Stage: Double Layer Mechanical
- Stage size: 140mm\*140mm
- Moving Range: 75mm\*45mm

- Focusing: Coaxial Coarse and Fine Adjustment
- Focusing Range: 30mm
- Focusing Interval: 0.002mm
- Condenser: N.A=1.25 Abbe condenser, Iris diaphragm & filter
- Illumination: Halogen Lamp 220V/6V20W or 110V/6V20W (LED lamp optional)



## Vet Automatic Integrated Gene Detection System V-RS

### Specifications

- Single channel
- Real-time Fluorescent PCR Technology
- Fully-closed Microfluidic Kit, No Contamination
- From sample to report as less as in 1 hour
- Excitation light source: LED
- Detector: PMT photomultiplier tube
- Fluorescence detection time  $\leq 5s$
- Display: 7-inch color touch screen
- Data connector: USB, WIFI, Network cable



## Vet Microplate Reader VRR-202

### Specifications

- 96-well plate, multiple tests in the single plate
- Wavelength: 405, 450, 492, 630nm, 4 more filters optional
- Test mode: End-point, kinetic, Multi-wave analysis
- Measuring system: 8-channel optical system
- Light source: Tungsten Halogen, 12V/20W, >2000 hours
- Reading speed: 5s single wavelength, 10s double wavelength
- Open system, test item and parameters can be added or modified.
- Large storage for 1000 test item and 1,000,000 results
- Arrangement of Test item in Micro-plate can be store and re-use



## Vet Hematology Analyzer VET-8300 3 Part

### Specifications

- Auto 3-part Hematology Analyzer
- 10 inches color touch screen
- Throughput: 60 samples per hour, open sampling
- 21 parameters +3 histograms
- 3 Test Modes: venous whole blood, capillary whole blood and prediluted
- Whole blood 9.6 $\mu$ l, prediluted capillary blood 20 $\mu$ l.
- Printout: built-in thermal printer, support external printer
- Storage: 200,000 samples (including histogram)
- Can test 11 kinds of animals (dog, cat, horse, pig, cow, sheep, monkey, mouse, goat, rabbit, potbellied pig), 14 kinds of animals can customized



## Vet Biochemistry Analyzer VC-3002B1

### Specifications

- 10 incubators and three timers
- 7 inch Color LCD, Touch screen
- Flow cell and Cuvette test mode compatible
- Real time curve showing
- 7 wavelength: 340, 405, 492, 510, 546, 578, 630 nm, 1 free position
- 90 test item pre-programmed
- Memory for 10,000 sample results
- Light source hibernate function making lamp life longer
- RS232 interface, PC connecting



## Vet Urine Analyzer VC-11B

### Specifications

- Test items: GLU, pH, NIT, PRO, BLD, KET, BIL, URO, SG, LEU, VC
- Wavelength: 70nm, 525nm, 625nm
- Test throughput: 120 tests/hour or 60 tests/hour
- Language: English
- Display: 240x128 LCD display
- Printer: Built-in thermal recorder, paper with 57mm
- Interface: Standard RS-232
- Storage: 1,000 results
- Light source: Super-high brightness LED white light source, with 30,000 hours lifespan



## Vet Blood Gas Analyzer V-BG800

### Specifications

- Sample type: Whole blood, Serum, Plasma, Dialysate, CSF
- Test items: pH/pCO<sub>2</sub>/pO<sub>2</sub>/K<sup>+</sup>/Na<sup>+</sup>/Cl<sup>-</sup>/Ca<sup>++</sup>/Hct)
- Both for syringes & capillary
- 35UL for capillary, 95UL for whole blood
- 1 min from the aspiration to result
- All-in-one design calibrate cartridge
- Preheats reagents & sample
- Data storage >5,000
- Colorful touch screen with high resolution
- Battery backup
- Build-in thermal printer



## Vet Medical Pharmacy Refrigerator VC-V226 (2~8°C)

### Specifications

- Capacity: 226L
- Temperature range: 2~8°C
- Ambient temperature: 10~32°C
- Controller: Microprocessor
- Display: Digital display
- Compressor: 1
- Refrigerant: R600a
- Cooling type: Forced-air cooling
- Defrost type: Auto
- Power supply: 220V 50~60Hz;
- Rated power: 140W
- Electrical current: 1A
- Power consumption: 1.6kWh/24h



## Vet Blood Bank Refrigerator VR-V208 (4°C)

### Specifications

- Capacity: 208L
- Temperature range: 4 $\pm$ 1°C
- Ambient temperature: 10~32°C
- Controller: Microprocessor
- Display: Digital
- Compressor: 1
- Refrigerant: R134a
- Cooling type: Forced-air cooling
- Defrost type: Auto
- Power supply: 220V 50Hz/60Hz
- Rated power: 183W
- Electrical current: 0.8A
- Power consumption: 2.22kWh/24h



## Vet Biological Safety Cabinet VBS-1200IIA2-E

### Specifications

- 7-inch color touch screen
- A2: 30% exhaust, 70% internal
- Working area (W\*L\*H): 1200\*650\*640mm
- External area (W\*L\*H): 1300\*800\*2150mm
- Filter: H14: 0.3 $\mu$ m@99.995%
- Light power: 16W\*2(LED)
- UV power: 40W\*1
- Exhaust Volume: 458m<sup>3</sup>/h



## Vet CO<sub>2</sub> Incubator VC-CHP-160

### Specifications

- Capacity: 160L
- Working size: 500x500x650mm
- Power: 950W
- Timer: 0-999min
- CO<sub>2</sub> range: 0-20%
- Microprocessor control, over temperature alarm, PID self-tuning.
- CO<sub>2</sub> sound and light alarm
- Heating Mode: water jacket



## Portable Pressure Steam Sterilizer V-YX-280D-I SERIES

### Specifications

Model	V-YX-280D-I-18L	V-YX-280D-I-24L	V-YX-280D-I-30L
Volume	18L	24L	30L
Max Working Temperature	129 C	129 C	129 C
Max Working Pressure	0.165Mpa	0.165Mpa	0.165Mpa
Time Range	0-999min	0-999min	0-999min
Temperature Range	RT-129 C	RT-129 C	RT-129 C
Sterilization Chamber	Φ280*236mm	Φ280*357mm	Φ280*412mm
Power	AC220V/50Hz/2.0KW	AC220V/50Hz/2.0KW	AC220V/50Hz/2.0KW



## Vertical Pressure Steam Sterilizer V-LX-B (DIGITAL) SERIES

### Specifications

Model	V-LX-B35L (Digital)	V-LX-B50L (Digital)	V-LX-B75L (Digital)	V-LX-B100L (Digital)	V-LX-B120L (Digital)	V-LX-B150L (Digital)
Volume	35L	50L	75L	100L	120L	150L
Max Working Temperature	134 C	134 C	134 C	134 C	134 C	134 C
Max Working Pressure	0.22Mpa	0.22Mpa	0.22Mpa	0.22Mpa	0.22Mpa	0.22Mpa
Time Range	0-999min	0-999min	0-999min	0-999min	0-999min	0-999min
Temperature Range	RT-134 C	RT-134 C	RT-134 C	RT-134 C	RT-134 C	RT-134 C
Sterilization Chamber (mm)	Φ280*477	Φ300*537	Φ360*477	Φ360*622	Φ430*582	Φ430*672
Power	2.5KW	2.5KW	3.5KW	4.0KW	4.0KW	4.0KW



## Horizontal Cylindrical Pressure Steam Sterilizer V-WS-YDB SERIES

### Specifications

Model	V-WS-280YDB	V-WS-200YDB	V-WS-150YDB
Sterilizing chamber volume	280L (φ600×1000mm)	200L (φ515×1000mm)	150L (φ440×1000mm)
working pressure	0.22 MPa		
working temperature	134 C		
Adjustment of temperature	40 C - 134 C		
Time of sterilization	0-99 min		
Time of drying	0-99 min		
Heat average	± 2 C		
Power	12KW/380V 50Hz	9KW/380V 50Hz	9KW/380V 50Hz



## Horizontal Pulse Vacuum Sterilizer V-WS-SERIES

### Specifications

Model	Capacity (m³)	Inner chamber Dimension(cm)	Outer Dimension (cm)	Steam pressure and consumption	Power	Design pressure	Design temp
V-WS-0.25	0.25	80*60*60	110*130*170	0.4-0.8Mpa 15kg	2+24KW	0.25 Mpa	139 C
V-WS-0.36	0.36	100*60*60	130*130*170	0.4-0.8Mpa 20kg	2+24KW		
V-WS-0.6	0.6	120*61*91	150*135*195	0.4-0.8Mpa 30kg	3+36KW		
V-WS-0.8	0.8	150*61*91	180*135*195	0.4-0.8Mpa 40kg	3KW		
V-WS-1.2	1.2	150*68*118	179*145*195	0.4-0.8Mpa 48kg	4KW		
V-WS-1.5	1.5	190*68*118	219*145*195	0.4-0.8Mpa 60kg	4KW		
V-WS-2.0	2.0	170*100*120	200*185*200	0.4-0.8Mpa 65kg	4.5KW		
V-WS-2.5	2.5	195*100*140	230*185*220	0.4-0.8Mpa 75kg	6KW		



## Table Pressure Steam Sterilizer V-YXQ.DY.250B35/50

### Specifications

Model	V-YXQ.DY.250B35 / V-YXQ.DY.250B50
Sterilizing chamber volume	35L (Φ300X500mm), 50L (Φ340X550mm)
Maximum working pressure	0.22 MPa
Maximum working temperature	134 C
Adjustment of temperature:	105~134 C
Timer	0-60 min
Chamber temperature equal	≤ ±1 C
Source power	2.7KW/AC 220V50Hz (AC110V 50Hz)
Sterilizing plate	(35L) 400×200×30mm (4 pieces) (50L) 500×250×30mm (4 pieces)
N. W	(35L) 73/90kg, (50L) 86/105kg
Dimension	(35L) 810*680*650mm, (50L) 880*730*700mm



## Table Pulse Vacuum Sterilizer VC-22L-B (LCD)

### Specifications

Voltage	AC 220V ±10%, 50/60Hz
Max Hp	1800VA
Physical Space	22L
Class	European Class B standard
Sterilizing temperature	121 C, 134 C
Special sterilization	Kill active HV, HBV, BSE and spore
Dry procedure	Strong vacuum drying, residual humidity <0.2%
Display	LCD, multi-languages
Sterilizing record	micro-printer and USB connector optional
Instrument containers	5 levels with 3 trays
Chamber size	249mm*450mm/249mm*355mm
Net weight	50Kg/47KG



## Dry Heat Sterilizer VRF SERIES

### Specifications

Model	VRF-9023A	VRF-9053A	VRF-9073A	VRF-9123A	VRF-9203A
Temperature Range	Room Temperature +10 °C -250 °C				
Temperature Controller	LCD display and P.I.D. temperature controller				
Work Room Dimension WxDxH (cm)	30*30*28	42*37*35	45*45*45	55*36*55	60*55*64.5
Capacity(L)	25	54	91	108	212
Outline Dimension WxDxH (cm)	58*50*45	71*56*53	74*64*63	83*61*72	88*74*82
Shelves	2	2	2	2	2
Rated Power (W)	650	1000	1500	1600	2450
Power	1Φ 220V 50Hz				



## Ultraviolet Ray Sterilization Trolley V-ZXC-II SERIES

### Specifications

-Wavelength: 253.7nm  
 -Power Source: AC220V (50HZ)  
 -Lamp arm adjust angle: 0-135° (II type)

-Timing range: 0~60 mins (II/SG/SGB Type)  
 -Illumination: ≥ 90μw/cm²  
 -Light: V-ZXC-II (PY) / V-ZXC-II (XY): Quartz light tube 30W\*2  
 V-ZXC-II (SG) / V-ZXC-II (SGB): Quartz light tube 30W\*4



## VET X-ray Digital Radiography System V-Y4Q

### Specifications

Output power	32kW
Table Top Size	1300 mm x 630 mm
High Frequency	300kHz
Tube Current	10-400mA
Tube voltage	40-150kV
Dual focus	Small focus:1.0; Large focus:2.0
Preview & Post processing Time	3s
Wired flat panel detector	17*17 inch
Power supply	220V 50Hz



## Vet X-ray Digital Radiography System V-Y4

### Specifications

Output power	32kW
Table Top Size	1210 mm x 610 mm
High Frequency	300kHz
Tube Current	10-400mA
Tube voltage	40-120kV
Dual focus	Small focus:1.0; Large focus:2.0
Preview & Post processing Time	3s
Wired flat panel detector	17*17 inch
Power supply	220V 50Hz



## VET C-arm X-ray Digital Radiography System VC-5

### Specifications

<b>X-ray generator</b>	
Output power	15KW
Current of fluoroscopy	0.3-10mA
Current of radiography	0.5-150mA
Voltage	40kV-125kV
mAs range	0.2-100mAs
ms range	10-1600ms
<b>X-ray tube</b>	
Focal Spot value	0.3mm /0.6mm
Rotating anode speed	2800rpm
Anode heat storage	300KHU
Housing Heat Storage Capacity	1200KHU
<b>Configure: Flat panel detector, Workstation, C-arm unit, Monitor</b>	



## Vet Mobile X-ray Digital Radiography System VC-NKX-100D

### Specifications

High-frequency X-ray machine	Output power	5kW
	Tube Current	10-100mA
	Tube voltage	40kV-125kV
	Dual focus	Small focus:0.6; Large focus:1.8
	Configure	Mobile rack, wired flat panel detector, computer
Power supply		220V 50Hz



## Vet Advanced Echo Cardiac Color Doppler Ultrasound Scanner VC-U18

### Specifications

- Ultrasonic host operating system: Windows operating system.
- carotid artery intima measurement thickness (IMT).
- Automatic spectral envelope measurement.
- Monitor: ≥21.5 inch, high definition ultrasonic display, ≥13.3 inch touch screen.
- Applications: Abdomen, obstetrics, gynecology, heart, urinary system, small organs, superficial, blood vessels, pediatrics, newborns, musculoskeletal.
- PW, CW, Duplex/Triplex, Directional PD, real time 3D/4D, TDI, Auto IMT, Elastography, Panoramic Imaging, Trapezoid Imaging, Anatomic M Mode, Auto-Adaptive Imaging Processing



## VET Color Doppler Ultrasound Scanner VC-U9

### Specifications

- 21.5 inch medical monitor + 13.3 inch touch screen
- Win7, Intel i5 processor, 4GB RAM, 128GB SSD+500GB HDD
- Four active probe sockets
- PDI, PW, CW, DPI, TDI, Trapezoid Imaging, Duplex/Triplex, Directional PD, Real time 3D/4D
- Chinese/ English/ Spanish/ French/ Russian



## Vet Full Digital Trolley Ultrasound Scanner VC-U15

### Specifications

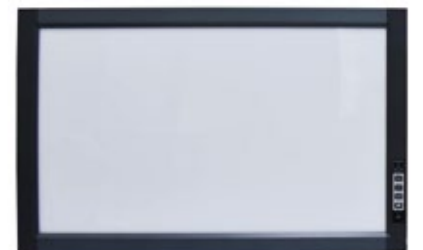
- 2D image.
- Display modes:15-inch LED LCD screen.
- B, B + B, B + M, M, 4B, 1024 \* 768 high resolution
- Structure type: trolley
- Support three probe sockets
- System language:Chinese, English, Spanish, French
- With U-disk storage and host image storage function



## X-ray Film Illuminator VZG Series

### Specifications

- Button in 9 brightness stages Each panel can be controlled separately
- Delay power off function
- High-efficient and durable LED light source, can work more than 100,000hours.
- PWM dimming system, color temperature can adjust flexible and stable.
- Sidelight with light guide plate technology. optimized structure, thickness is 2.5 cm.
- Automatic sensing function, plug is bright, memory function.
- Aviation aluminum +ABS structure
- Min brightness≤300cd/m2, Max brightness≥4000cd/m2



## Vet Portable Color Doppler Ultrasound Scanner VC-U6

### Specifications

- 15 inch LED screen, with Li-battery backup
- Compound Imaging, 2B/4B Imaging Modes, Real-time 3D Imaging.
- Pulse Doppler Imaging (PW), Tissue Harmonic
- Imaging (THI), Direction Power Doppler Imaging (DPDI).
- Color Doppler 128 elements, Win 8, 128GB SSD.
- Support: Chinese/ English/ Spanish/ French/ Russian
- All-in-one clipboard: saved images display on the screen



## Vet Portable B/W Ultrasound Scanner VC-U10

### Specifications

- Display mode: B, B + B, 4B, B + M, M.
- With Li-battery backup (4-8h)
- Support OB Report
- 12 inch LCD monitor
- THI and Histogram function
- One probe socket (with probe socket for option, to enable two sockets)
- Support: Chinese/ English/ Spanish/ French/ Portuguese/ Russian
- It is applied to cow, horse, sheep, swine, cat, dog.
- Pregnancy test and measurement of back fat thickness in large animals such as cattle, sheep, horses and pigs.



## Vet Handheld B/W Ultrasound Scanner VC-U1

### Specifications

- 5.6 inch LED display.
- User-friendly operation interface.
- Display mode: B, 2B, B/M.
- USB, TF card ports are for convenient and fast image storage and playback.
- Integrated long life lithium battery ensure long power outages check, AC and DC dual-use.
- Real-time dynamic beam apodization
- Aluminum suitcase



## Wireless Probe Type Ultrasound Scanner VC-3in1

### Specifications

- Scanning mode: Electronic array, convex with cardiac namely phased array or linear array scan.
- Display mode: B, B/M, Color, PDI, PW.
- Frequency: convex probe 3.5/5MHz, linear probe 7.5/10MHz.
- Elements: 192 elements.
- Scanning Depth: Convex 100-305mm, Linear 20-100mm, adjustable.
- Field of view: Convex R60, Linear L40.
- Screen: Smart phone or tablet screen.
- Supporting system: iOS, Android, Windows.



## Vet Portable Flexible Insemination Endoscope VED-400

### Specifications

- Diameter of distal end  $\Phi$ 8.5 mm
- Diameter of insert tube  $\Phi$ 8.5mm
- Clamp aperture  $\Phi$ 2.0mm
- OD of insemination Gun  $\Phi$  0.9mm
- ID of insemination Gun  $\Phi$  0.6mm
- Working length 600mm
- Resolution: CMOS 1,000,000 pixels
- Used for Bovine and Horse



## Vet Portable Flexible Nasopharyngoscope/ Bronchoscope VED-3112C1

### Specifications

- View of field : 120°
- Diameter of distal-end :  $\Phi$ 3.0mm
- Diameter of clamp aperture :  $\Phi$  1.0mm
- Depth of field : 3-50mm
- Range of bending : UP130°; Down90°
- Working length : 600mm
- LCD screen: 3.5"
- Used for Pets and Eccentric pets (turtle, rabbit, hawk)



## Vet Flexible Gastroscope/ Colonoscope VED-8800

### Specifications

- Insert tube: 8.0mm/9.8mm
- working channel: 2.0mm/2.8mm
- working length: 1500mm
- Configure:
  - Video Flexible endoscope
  - Endoscope processor & light source
  - Suction device
  - Trolley
  - 24" LCD monitor
- Used for small Pets



## Vet Rigid Endoscope System VED-1000

### Specifications

- Rigid endoscope Part
- Sigmoidoscopy set
- Laparoscopy
- Sinoscope
- Rigid Cystoscopy parts
- Arthroscopy Part
- Optional:
  - Part 1- Video Processor and Light Cold Source 2 in 1 Machine
  - Part 2- Electrosurgical Unit
  - Part 3- CO2 Pneumoperitoneum Insufflator Machine
  - Part 4- Medical pressurizer
  - Part 5- Irrigation Pump
  - Part 6- LCD Monitor
  - Part 7- Equipment Vehicles
  - Part 8- Sterilization Equipment



**Vet Portable Dental Unit VET-402**

**Specifications**

- Supply Pressure: 110V~220V/50Hz~60Hz
- Air Flow: 65L/min
- Pressure: 0.6Mpa
- Noise: 39dB(A)
- Weight: 15kgs



**Vet Portable Dental Unit VET-406**

**Specifications**

- Supply Pressure: 110V~220V/50Hz~60Hz
- Air Flow: 130L/min
- Pressure: 0.8Mpa
- Noise: 40dB(A)
- Power: 600W (Aluminum Box)



**Vet Dental Cleaning Table VDT-02**

**Specifications**

- Material: 304 Stainless steel
- The water leakage is made of stainless steel filter, so falling water will not be blocked.
- Product Size: L130\*W60\*H80cm
- Package Weight: 130KG



**Vet Dental X-ray Unit VET-10D**

**Specifications**

- Tube voltage: 70KVp
- Tube current: 8mA
- Focus size: 1.5mm/0.8mm
- Total filtration: 2.5mmAL
- Exposure time: 0.2 to 4 sec
- Leak radiation: Outside one meters≤0.002mGy/h



**Vet Cassette Sterilizer VN SERIES**

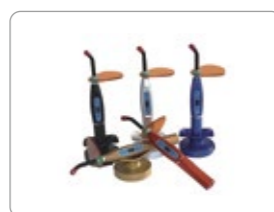
**Specifications**

Quick sterilization for small type medical appliances used in dental handpieces, ophthalmic precision instruments, dental rigid endoscope and surgical instrument

The entire process takes only 9-12 minutes	
Cavity material	SUS304 stainless steel
Cassette internal size (L*W*H, mm)	380x180x80 (N-5D)
	490x180x80 (N-5DL)
Cassette volume (liter)	5 & 5.2
Sterilization temperature	121°C-134°C
Power	1.3Kw
Weight(kg)	45



Ultrasonic Scaler



LED Light Curing Unit



High Speed Handpiece

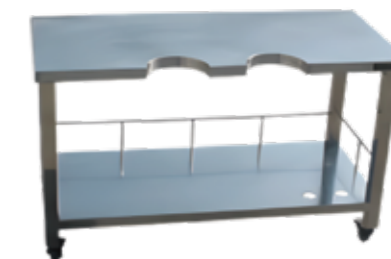


Oral Digital Image System

**Vet Examination Table VZL-03**

**Specifications**

- Material:Stainless steel
- Product size:L110\*W55\*H70cm
- Usage:for animal B-mode ultrasonograph



**Vet Wood's Lamp V-9000B**

**Specifications**

- Two LED light sources UVA Light+SMD LED
- Three levels of light source brightness adjustment
- Shade cloth and observation window
- Mobile phone holder can fix the smart cellphone to take picture
- Rechargeable lithium battery.



**Vet Handheld Pulse Oximeter VET-100V**

**Specifications**

- 2.8" high resolution color display, two display directions
- Turn off automatically for power saving
- Two types of power supply:AC charge or 4AA batteries
- Three measurement modes:spot-check,record and monitoring
- 3-Level visual and audio alarms with adjustable alarm ranges
- Continuous stores data for 999 patient files in 120 hours
- Data can be stored on a computer and managed analyzed and printed by using the ODMS system.
- Silent sleep monitoring, with data storage and automatic power-saving features for patients with 24 uninterrupted care
- Suitable for 0-200KG animals



**Pet Scale VC-FS SERIES**

**Specifications**

- Dimension:0.8\*0.8(m), 1.0\*1.0(m), 1.2\*1.2(m), 1.2\*1.5(m), 1.5\*1.5(m), 1.5\*2.0(m), 1.5\*3.0(m), 2.0\*2.0(m)
- Capacity:Up to 10t
- Material:Carbon steel/Stainless steel
- Display type:LED/LCD
- Load Cell Sensitivity:2.0±0.002mv/v



## VET ENT Diagnostic Set VWG-I

### Specifications

- Ophthalmoscope--- 1
- Otoscope Carrier--- 1
- Ear Specula (Φ3/Φ4/Φ5/Φ6)--- 4
- Nasal Speculum (Φ8)--- 1
- Nose Dilator--- 1
- Laryngeal Mirror Stem--- 1
- Laryngeal Mirrors (Φ15/Φ18/Φ21)--- 3
- Plastic Tongue Depressor --- 1
- Battery Handle--- 1
- Spare Bulbs (2 Large and 2 Small 2.5v/0.3A) --- 4
- Power Supply: 1.5V X2 "C" Type battery(#2)



## Vet Slit Lamp VME-5D

### Specifications

Microscope Type	Parallel Stereoscope
Magnification	Five steps magnifications
Eye piece	12.5x
Total Magnification and Diameter of Visual Field(mm)	6x, 10x, 16x, 25x, 40x
Adjustable Range of Pupil Distance(mm)	55~75
Adjustable Diopter	>±7D
Slit Width(mm)	0-9 adjustable or 0-14 adjustable
Slit Height(mm)	1~9 adjustable or 1-14 adjustable
Slit Angle	0~180°
Slit Inclination	5°, 10°, 15°, 20°
Filters	Heat Absorption, Grey, Red Free, Cobalt Blue
Illumination Bulb	12V / 30W or 12V/50W halogen bulb



## Vet Ophthalmoscope VME-8B

### Specifications

- Illumination form: small light spot (1.6mm), large light spot (3.2mm), slit,central-net, Red-free filter.
- 3.6V/2.6W mini-halogen bulb
- Li-on battery, 5 VA input power



## Vet Vascular Doppler Detector VC-520+

### Specifications

- Detecting the blood flow in veins and arteries of animals by 9 MHZ probe;
- Suitable for detecting anastomosis of animal blood vessels and limbs after surgery;
- Bar LED cursor to show the blood flow intensity;
- Working mode: continuous work.
- Ultrasonic frequency: 9.0MHz±10%
- Battery and adapter: 7.4 V Li-ion rechargeable batteries
- Adapter input voltage: 220V±10%, 50 Hz±1 Hz (or AC 110 V±10%, 60 Hz±1 Hz)



## Blood Pressure Monitor VBM-100

### Specifications

- Measurin range:SBP DBP MBPPulse
- Measuring method:Automated Oscillography
- Display:5- inch color touch screen
- Operating mode:Single point measurement /Monitoring mode
- Electrical:DC 5.0V; 4xAA batteries
- Unit of measure:mmHg/kPa optional
- Blood pressure measuring range  
SBP:25-290mmHg;  
DBP:25-290mmHg;  
MBP :15-260mmHg
- Typical measuring time:20~40s



## Pet Hospital Infrared Therapy Cage VCA-04D

### Specifications

- Material Stainless steel
- Product Size L122\*W70\*H183cm
- Upper cage L61\*W70\*H61cm
- Lower cage L61\*W70\*H82cm
- Oxygen Chamber 1
- Package Weight 230kg



## Pet Stainless Steel Display Cage VCA-04P

### Specifications

- Material: Stainless steel
- Full round corners, easy to clean.
- Product Size: L122\*W70\*H157cm
- Package Weight: 190KG



## Pet Stainless Steel Luxury Cat Cage VCA-08

### Specifications

- Material: Stainless steel
- Product Size: L100\*W60\*H180cm
- Package Weight: 200KG



## Pet Stainless Steel Hospital Cage VCA-13

### Specifications

- Material Stainless steel
- Product Size L244\*W70\*H218cm



**Pet Treadmill VET-J100 (FOR CAT)**

**Specifications**

- Run Surface Size: 28\*85cm
- Run Surface Thickness: 1.2mm
- Run Board Thickness: 12mm
- Speed Range: 0.8-6km/hour
- Motor: 200W
- Display: LED, shows Speed, Time, Distance, Calories



**Pet Treadmill VET-C300S/C300WS (ELECTRIC INCLINE)**

**Specifications**

- Run Surface Size: 40\*145cm
- Run Surface Thickness: 1.6mm
- Run Board Thickness: 15mm
- Speed Range: 0.8-12km/hour
- Motor: 1.75HP
- Display: LED, shows Speed, Time, Distance, Calories



**Pet Treadmill VET-C300F (FOLDABLE)**

**Specifications**

- Run Surface Size: 38\*150cm
- Run Surface Thickness: 1.6mm
- Run Board Thickness: 15mm
- Allowable Weight: 100KGS
- Speed Range: 0.8-12km/hour
- Motor: 1.75HP
- Display: LED, shows Speed, Time, Distance, Calories



**Pet Treadmill VET-C400WSH (Front and Rear Electric incline)**

**Specifications**

- Run Surface Size 46\*177cm
- Run Surface Thickness 1.6mm
- Run Board Thickness 15mm
- Allowable Weight 110KGS
- Lifting Maximum Height 27cm
- Speed Range 0.8-12km/hour
- Motor 3HP
- Display LED, shows Speed, Time, Distance, Calories



**Pet Dryer VET-U7**

**Specifications**

- Interior size(W\*D\*H): 46x38.5x45cm
- External size(W\*D\*H): 53x53.5x65.4cm
- Net weight: 35kg
- Power: 1200W, 110V/220V, 50/60Hz
- Draught: fan 2
- Air outlet: 26
- Suitable breeds: 1 small dog or cat weighting about 8KG



**Pet Dryer VET-U4P**

**Specifications**

- Interior size(W\*D\*H): 36.4x45.5x40cm
- External size(W\*D\*H): 48x69x113.7cm
- Power: 1200W/single layer, 110V/220V, 50/60Hz
- Draught fan: 4
- Air outlet: 16/single layer, 32/double layer
- Suitable breeds: 2 small dogs or cats weighting about 8KG



**Pet Dryer VET-U1D**

**Specifications**

- Interior size(W\*D\*H): 86.3x48.3x47.4cm
- External size(W\*D\*H): 99x71.5x73.8cm
- Power: 1800W, 110V/220V, 50/60Hz
- Draught fan: 4
- Air outlet: 50
- Suitable breeds: 2 small dogs of 15KG or a medium-sized dog



**Pet Blowing Machine VET-DM02 (DOUBLE MOTORS)**

**Specifications**

- adopts high quality metal shell with adjustable speed and adjustable temperature.
- Power 2400-3600W, voltage 110V-240V
- wind speed <78.85m/s,
- heating temperature up to <75 degrees.
- with about 3 meters long telescopic hose and three new outlets, can quickly dry pet hair.



## Pet Grooming Clipper V-S1

### Specifications

- 100-240V, 50-60HZ, 15W
- Cord hair clipper
- Ceramic & Titanium blade
- 5 adjustable blade levels
- Professional 12V powerful motor
- 4 positioning combs



## Pet Grooming Clipper V-P9

### Specifications

- LCD screen
- Three-speed, suitable for all kinds of hair
- Large capacity lithium battery, shorter charging time
- 3.0V motor, Strong power
- Universal voltage, charging and plug-in dual use
- Five-speed fine-tuning trim 0.8mm, 1.1mm, 1.4mm, 1.7mm, 2.0mm



## Pet Grooming Table VBT-501

### Specifications

- The desktop is made of 8cm tempered frosted glass and LED light strips. Wireless remote control.
- The height of the desktop is driven by a motor and controlled by a pedal. The height can be adjusted as needed. The load capacity is 120kgs, and the lifting range is 20cm to 92cm. The new electric lifting method can realize pets jumping on the table freely.
- The suspender is 201 stainless steel H-shaped, adjustable in height, and the wall thickness is uniformly 1.0mm. The boom is equipped with 2 braided ropes to facilitate fixing pets, and its length is 50cm.
- The base is formed by welding carbon steel pipes with a thickness of 1.2m.
- The bottom is equipped with adjustable screws, so that it can be placed stably on different ground conditions.



## Pet Grooming Table VBT-401

### Specifications

- 1.8CM density board desktop. The special damping disc brings a moderately elastic and moderate rotation experience on the table; the slim shape is suitable for small pet modeling operations.
- Equipped with nylon clamps and folding suspenders, the suspenders are 201 stainless steel, adjustable in height, and the wall thickness is unified at 1.0mm. The hanging rod is equipped with a braided rope to facilitate fixing pets, and its length is 50cm.
- Step-on design, light and convenient, equipped with a pneumatic push rod, can make the table rise and fall smoothly; "one-button start" air rod drives the table, the height can be automatically raised by lightly stepping on the foot pedal, and the suitable height can be adjusted at will. The maximum static pressure is 50kgs, and the lifting range is 70cm to 104cm.
- The base is formed by welding carbon steel pipes with a thickness of 1.2m.
- The bottom is equipped with adjustable screws, so that it can be placed stably on different ground conditions.



## Pet Grooming Table VBT-302

### Specifications

- 1.8CM density board desktop.
- The height of the desktop is driven by a motor and controlled by pedals. The height can be adjusted as needed. The load capacity is 120kgs, and the lifting range is 20cm to 90cm. The new electric lifting method can realize pets jumping on the table freely.
- One suspension rod for nylon clamp; the suspension rod is 201 stainless steel, adjustable in height, and one section of suspension rod. The length is 123CM and the wall thickness is 1.0mm. The hanging rod is equipped with a braided rope to facilitate fixing pets, and its length is 50cm.
- The base is welded by 30\*50mm carbon steel pipe with a thickness of 1.2m.
- The bottom is equipped with adjustable screws, so that it can be placed stably on different ground conditions.



## SPA Water Bath Therapy Tub VET-901S (STAINLESS STEEL)

### Specifications

- Product Size: 76\*45.5\*99cm
- Depth: 40cm
- Material: The whole body is made of 304 stainless steel, which can be used for medicinal baths and showers



## Cat Bath Tank VET-91D (ACRYLIC)

### Specifications

- Cylinder size: 70\*58\*100cm
- Pool size: 45\*35\*45cm
- Material: High-grade thickened acrylic sheet



## Bathing Water Tank VET-YC05 (STAINLESS STEEL)

### Specifications

- Product Size: 130\*74\*(117~160)cm
- Advantage: Convenience and efficiency, height adjustable, with non-slip footwear
- Material: 304 stainless steel



## Hydrotherapy Pet Bath Tub VET-R8753

### Specifications

- Installation Type: Freestanding
- Way of Control: Computer Control
- Option 1: air bubble + whirlpool massage
- Option 2: air bubble + whirlpool massage + constant temperature
- Option 3: air bubble + whirlpool massage + constant temperature + control panel
- Option 4: air bubble + whirlpool massage + constant temperature + control panel + ozone



## SPA Water Bath Therapy Machine VC-500D

### Specifications

- Product Size: 31\*30\*21cm
- Three-in-one natural ultrasonic, O3 ozone, far infrared, negative ions, heating
- Accurate temperature sensing, digital screen display at a glance
- Ultra-quiet, gentle to reduce pet stress
- Two-in-one function: integrated spa and water blower, efficient

